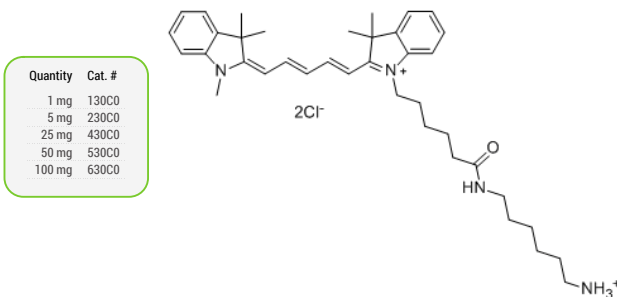


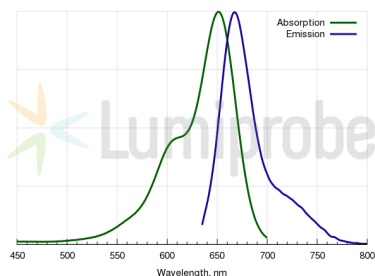
## Cyanine5 amine

Cyanine5 amine is a reactive dye which contains amino group, an analog of Cy5® amine. This reagent can be coupled with a variety of activated esters and other electrophilic reagents. For example, this amine can be coupled with EDC-activated carboxylic groups.

This bright and photostable dye is suitable for many different methods of fluorescence detection. Colorful fluorophore can also be easily detected in small quantities (nanomols) by naked human eye.



Absorption and emission spectra of Cy5 fluorophore



### General properties

Appearance:	dark blue powder
Molecular weight:	653.77
Molecular formula:	$C_{38}H_{34}Cl_2N_4O$
Solubility:	moderate solubility in water, good in polar organic solvents (DMF, DMSO, alcohols)
Quality control:	NMR $^1H$ , HPLC-MS (95%)
Storage conditions:	Storage: 24 months after receipt at $-20^{\circ}C$ in the dark. Transportation: at room temperature for up to 3 weeks. Avoid prolonged exposure to light.

### Spectral properties

Excitation maximum, nm:	646
$\epsilon$ , $L \cdot mol^{-1} \cdot cm^{-1}$ :	250000
Emission maximum, nm:	662
Fluorescence quantum yield:	0.2